

Contacts

Selectboard

Kathy Barrett: 453-4232

Steve Dupoise: 349-9233

Carole Hall: 453-5543

Doug Tolles: 545-2020

Jim Walsh: 989-9368

Town Clerk

Pam Kingman: 453-3516

Town Treasurer

Barb Torian: 453-3516

Town Shed

453-3397

Beeman Elementary

453-2331

Mt. Abe High School

453-2333

Superintendent's Office

453-3657

Community Library

Deborah Lundbeck: 453-4015

Events Coordinator

Suzy Roorda: 453-5978

Fire Chief

Alan Mayer: 453-5129

377-0475 (cell)

Burn Permit: Fire Warden

Dave Heisler: 453-7286

771-7236 (cell)

Planning Commission

Rob Litch: 453-4840

Development Review Board

Tim Bouton: 453-4596

Zoning Administrator

Dave Wetmore: 453-3516

Animal Control Officer

Wayne Marcelle:

1-802-233-9534

Any non-profit group event that is open to all members of the community can be listed in the Community calendar.

Contact:

Pam Kingman: 453-3516

Suzy Roorda: 453-5978

Selectboard News

The Selectboard will begin the budget process for both the Roads and the General Fund in December, with a final proposal voted on by the Selectboard in January to present to the voters. The meetings are open to the public, so if you would like input, now is the time to let your ideas be known. If you check the calendar, you will see that Town Meeting is Monday, February 29, 2016, with voting on Tuesday, March 1, 2016. This is your opportunity to have a say in the Town.

As you may know, an electrical transmission company, Anbaric, has partnered with National Grid to propose a conversion station in New Haven. They are looking at two different sites and are meeting with people around Town. They have been at two Selectboard meetings as I write this article. The Selectboard has submitted 69 questions to them for more information. They will be at the Selectboard meeting on Tuesday, November 17th with answers to some of those questions and a time line for answering the rest of the questions. The minutes for that meeting will be up on the New Haven website (www.newhavenvt.com) prior to your receipt of the newsletter. Please check the website for the latest information. We expect that they will be attending many more Selectboard meetings. Please let us know your feelings about this proposal.

Respectfully submitted, Kathy Barrett, Chair

Clerk's News: R & L Rubbish wants all of you to know they will be at the Town Garage on Saturday, December 26th to accept trash & recycling during normal hours. The Town Offices will be closed Dec. 23 – 25, and Dec. 31st and Jan. 1st. Wishing all of you a wonderful Holiday Season.

Respectfully, Pam Kingman

School Board News

On Tuesday November 17th, all School Boards in the Supervisory Union convened at Mt Abraham Union High School to hear an important ENDS monitoring report and presentations on other common topics. The individual School Boards then conducted their respective regular November meetings.

Supervisory Union Budget Planning –

The Boards reviewed a preliminary FY17 budget analysis. Special Education Director, Susan Bruhl, presented detailed program information. SPED services account for approximately 70% of spending at the Supervisory Union level.

Life and Career Skills - The School Boards received an ANeSU ENDS policy monitoring report on Life and Career

Skills. Evidence from the areas of personalized learning, expanded learning, student discipline, and student activity participation was presented by the Acting Superintendent to demonstrate achievement of the ENDS policy goals.

Beeman Elementary Budget Planning – The New Haven School Board discussed the primary drivers affecting next year's budget including: equalized pupil counts, the Supervisory Union budget allocation, health insurance cost increases, and the Act 46 1.54% spending increase threshold. The highly-significant equalized pupil count is due (from the State) around December 1st, and the Board expects to conduct a conclusive FY17 budget proposal review at its December meeting.

Continued on Page 4

Community Library News

Happy December, everyone! As usual, we have many seasonal collection offerings to help to get you into a festive mood. We have plenty of classics, and also new holiday materials - DVDs, books, and audio books for all ages. And at no cost to anyone! I look forward to seeing you.

On December 12 we will be offering two holiday crafts, taught by two young women who are longstanding craft -ing queens! At the time of writing, they will be here 10:30 - noon, but please check closer to the day for the actual time. In order

to plan for materials, a sign up is required, but all are welcome. Children younger than seven should be accompanied by an adult to help. Crafts will be geared (loosely) for the seven to twelve age group.

I will also be doing the traditional "holiday craft stations" the week of December 14th. There is no sign up necessary for that.

My best wishes for a safe and wonderful December
And a happy New Year to all!

Deborah Lundbech

Friends of the New Haven Community Library

At our November meeting we welcomed new member Gail Zuck. The Friends are always open to anyone interested in helping to sustain our library. What does it mean to "sustain our library"? Friends have helped the library by raising funds and organizing events like "Food, Wine, Books" and holding biannual used book sales. Special programs and book awards are made possible by the Friends. We invite speakers each year from the Vermont Humanities Council Speakers Bureau. (Watch this space for January's event.)

In place of our regular monthly meeting on December 2nd, we will celebrate at the home of a Library Friend. Please call Deborah Lundbech for details.

All are welcome!

Donations to help us enrich the library in these and other ways are crucial to our efforts.

I would like to help sustain the many programs supported by
Friends of the New Haven Community Library! I am able to contribute:

_____ \$10 _____ \$25 _____ \$50 Another Amount: \$ _____

I would like to become a member of the Friends of the NH Library

Name _____

Mailing address _____

Phone _____ Email _____

Please make checks out to: Friends of the NHCL

Mail to Michele Chester, Treasurer
2180 Main St, New Haven, VT 05472,

or drop this form off at the New Haven Community Library.

Thank you!

Winterfest: Saturday, December 12th

Santa - Tree Lighting - Bell Ringing - Caroling - Horse Drawn Wagon Rides

4:30 The New Haven Winterfest Celebration is Saturday, December 12th. Festivities begin at 4:30 pm with tasty treats and hot drinks at The Congregational Church. The Church is located on Town Hill Road across from the Village Green Market.

5:00 Bundle up, get a free hot cup of cocoa, tea, coffee, eggnog or cider (available throughout Winterfest at the Church), then come across the street to the Town Green. The Memorial Tree Lighting on the Green, sponsored by the New Haven Volunteer Fire Department, is at 5 pm. Decorate the tree, warm your hands by the fire barrels, make and eat s'mores, sing carols, and roast marshmallows and chestnuts with family, friends and neighbors while we wait for Santa to arrive at the bandstand around 5 pm. Take a ride on a horse drawn wagon, while you wait to talk with Santa, or after.

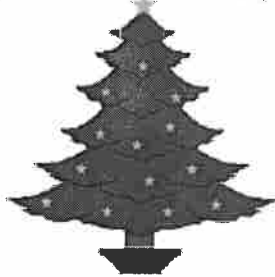
6:00 Please join us back over at the Congregational Church for the magical sounds of hand bell ringing, caroling with the choir and sing along! More hot cocoa, tea, coffee, eggnog, cider and yummy desserts are to follow downstairs in the Church.

Get together with family, friends and neighbors for the festivities in New Haven! This is a free community event sponsored by the Town of New Haven and the New Haven Congregational Church. ADA accessible.

All are welcome!

For more info, directions, to volunteer or make yummy treats to share, please contact Suzy Roorda at 453-5978 or newhavenrec@gmavt.net.

New Haven Memory Tree



Honor your deceased loved ones
by lighting a bulb.

Tree lighting will be December 12 at 5:00 pm
at the town green.

Name of Giver: _____

Address: _____

Phone: _____

List of those to be remembered:

1. _____ 3. _____

2. _____ 4. _____

If you have more names use another sheet

\$2.00 per name. Send donations to New Haven Fire Department
PO Box 120, New Haven, VT 05472

School Board— Continued from page 1



Superintendent Update – The ANeSU Supervisory Union Board concluded a separation agreement with former Superintendent, David Adams. The Executive Committee approved the hiring of former Vermont

Secretary of Education, Armando Vileseca, to be Interim Superintendent through July 1, 2016. The Supervisory Union Board has engaged VSBA consultant, Bob Stevens, to coordinate and assist with a permanent new Superintendent search.

Act 46 Community Engagements – About 70 community members attended a 5 town Act 46 school informational meeting in Starksboro on November 9th. More events are planned, including specific engagements for the New Haven community. The requisite Act 46 Study Committee was formed to analyze possible school merger options and recommend a response to this landmark legislation. Board member, Ed McGuire, and community member, Sarah LaPerle, are New Haven’s delegates to the Study Committee.

Respectfully submitted by the New Haven School Directors: Brad Bull (Chair), Ed McGuire (Vice Chair), Phyllis Smith (Clerk)

New Haven Cub Scouts

For the past 25 years, the New Haven Cub Scouts Pack 600 has been providing the youth of New Haven with opportunities to have fun while learning new skills that they can use daily for years to come. Currently, our numbers have fallen dangerously low, and we may not be able to re-charter the program for next year. If we don't reach the numbers needed by December 15, 2015 we will not be able to go on.

If you or someone you know would like to join and be part of this great program, please contact James Bachand at 349-3830. We meet at the New Haven Congregational Church on Sundays from 4-5:30 pm.

Yours in Scouting, James Bachand

New Haven First Response

New Haven First Response team has been working hard to provide our community with quality emergency care. In the last 18 months the members have put in over 350 hours of training to become re-certified and meet the qualifications that the State of Vermont requires for us to maintain our license; to be able to provide the community with the emergency care it needs.

New Haven First Response has had a total of over 120 calls since being re-established late last year, with over 100 of these being this year. These include car accidents, cardiac arrests, broken bones and several other minor incidents. New Haven Fire Department and New Haven First Response work closely together to provide the quality care that our community needs. We respond as a team to all calls that come in, and assist each other during our times of need, but remain a separate entity.

New Haven First Response is looking for new members, donations and people who can assist with fund raisers. If you are interested in any of these please e-mail Nick Hamel at Nhamel802@gmail.com, or mail donations to New Haven First Response, P.O. Box 20, New Haven VT, 05742.

Thank you! New Haven First Response Members

Barbara Garrow

The **Historical Society** will meet in the library at 7 pm December 9th. We will be having a Christmas gala with desserts, games, and music. **All are invited.**

Margo Merritt



Armchair Naturalist

The Conservation Commission invites you to attend our December program, which focuses on the New Haven River.

“Tales from the New Haven River-Walker”

Presented by: Sonia DeYoung, University of Vermont Field Naturalist

When:* Thursday, December 10th, 7:30pm – 8:45pm

Where: New Haven Town Office

In July 2015, Sonia walked the length of the New Haven River from headwaters to confluence—about 25 miles. Over six days she met watershed residents of all ages and professions (maybe you met her!) They told her about their lives along the river, invited her into their homes, and opened her eyes to the many ways a river can move us. She'll share her stories from the experience and how it has influenced her graduate work at UVM and her approach to life.

Mark your calendars. We hope you can join us!

Questions? Please email Dean Percival at percival@madriver.com

Sponsored by: The New Haven Conservation Commission: Dean Percival (chair), Al Karnatz, Mark Krawczyk, Ruth Penfield, Susan Smiley

Admission is always free.

The Armchair Naturalist Speaker Series is held during the fall, winter and early spring.

***Please note:**

Date changed from Tuesday, December 1st to Thursday, December 10th

Letter about Anbaric

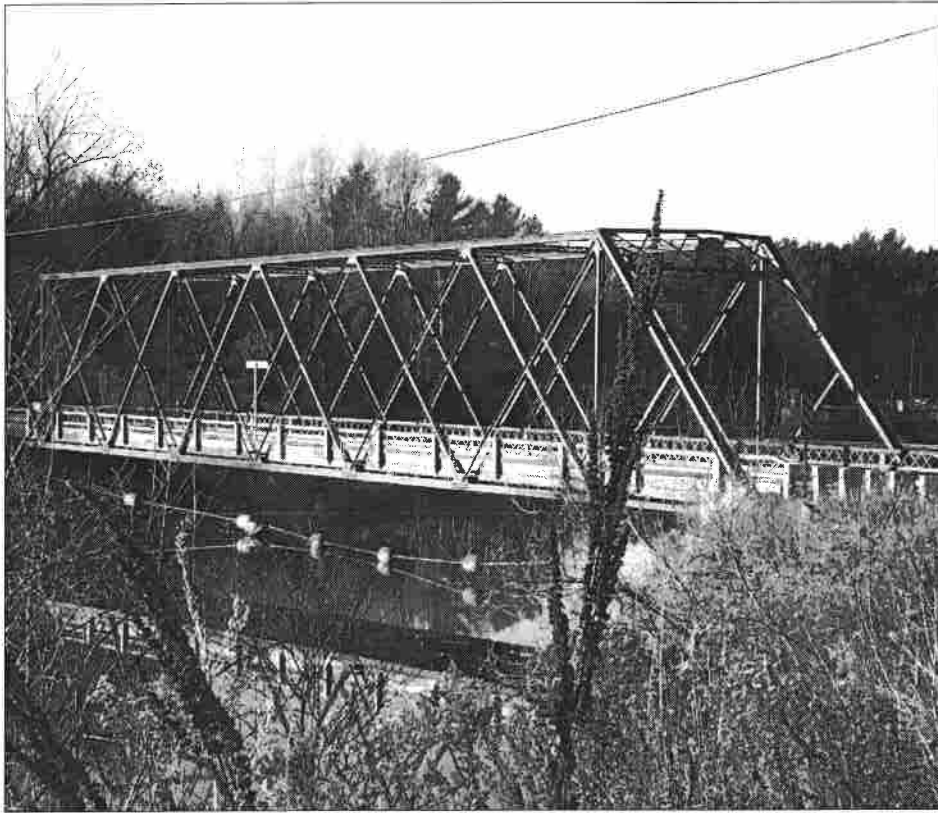
Friends and Neighbors,
Some people from Massachusetts want to use Vermont as a way to get up to 800 MW of electricity (more than the output was of the nuclear power plant at Vernon) from upstate New York for sale in Rhode Island and Connecticut. The transmission line from New York under Lake Champlain would carry DC (Direct Current) electricity, and then that would be converted to Alternating Current (AC). In order to do that conversion they want to build a 4 - 5 acre industrial complex on agricultural land on the north side of Rte 17 (Main Street) just before Forest Drive at the top of the hill down to Rte 7. That would include a 50 foot tall building with a 'footprint' about the size of a football field, similar to the size of the Woodchuck Hard Cider plant on Exchange Street in Middlebury. The AC electricity produced would go along the VELCO high voltage transmission line (which was strongly opposed by New Haven when it

was changed to larger and more obvious wooden poles) and possibly be changed to large metal towers.

"Health Effects of Living Near Power Lines" (see <http://emwatch.com/power-line-emf/>): "There has been concern over power line radiation and its effect on human health for at least 40 years. Living close to power lines has been shown to increase the risk of leukemia and other cancers since 1979, when convincing evidence was first published by Wertheimer and Leeper in the American Journal of Epidemiology."

The company (Anbaric) wants to give New Haven \$700,000 per year for 20 years to not oppose their project. They have also said several times that if we do not want their project then they would not do it. It seems that the best response is to thank them for their offer, but we live in New Haven because we value the quality of a rural life and landscape, and that is not for sale.

John Madden

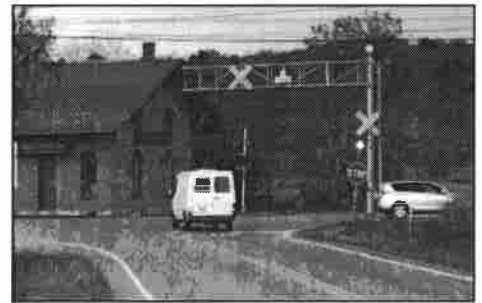


Where is it?

E-mail your answers to me at jgallott@gmavt.net, write the answer down and drop it off at the Town office, or hand it to me if you see me around town **by December 15th.**



Jim Gallott



Where Was It?

"This is a picture of the intersection of Route 17w and Route 7, with my office (Roundtree Construction) straight ahead, which was a RR station built in 1870, I believe. We get many visitors wanting to see the train station and take pictures. Roundtree has occupied the building owned by the VT Historical Society since 1970." - Stacey E. Gebo

Correct Answers: Roger Hamilton, Pam Marsh, Stacey Gebo, Norma Norland, Jim Walsh, Ammy Martinez

Looking for Mystery Photos

Do you have any old photos of places in New Haven? Or even current photos that you think will stump other residents? Jim Gallant, who has faithfully submitted his photos to the "Where Is It?" column over the past many years, would like to take a break! So, starting with the January newsletter, we're trying something with a different twist. Here are the guidelines:

- Send me either current or old photos of puzzling places—or once common objects—that might stump people.
- These photographs should be in digitized or scanned form—and include your name and contact information.
- Identify the photograph with as much information as possible—exact location & other relevant information (& date, if it's an old photo).
- Be sure to get permission to submit the photograph, if necessary.

I'll print the photo & collect answers. The following month I'll print the answer, along with the name of the person who submitted the photo—and names of the people who identified it correctly.

Of course the success of this venture will depend on what photos I receive—and space available in the newsletter. Send me your photos any time.

Jean Simmons

jmsimmons@gmavt.net

December 2015 New Haven Community Calendar

Location of Events Key: Town Hall= TH Town Offices= TO Town Garage= TG Cafeteria= C Gym= G Beeman= S MAUHS= HS Village Green =VG Village Green Market= VGM Congregational Church= CH Library= L Fire Station= FS * Recycling at Town Garage Saturday Mornings 8-12 *

Sun	Mon	Tue	Wed	Thu	Fri	Sat
		1 No Library Story Hour Bone Builders Exercise Class 10:30am CH Selectboard Mtg. 7pm TO	2 Tai Chi 4:30pm CH Library Friends Mtg off site. Call for details. Fire Dept. Mtg. 7pm FD	3	4	5 Recycle 8am-12pm TG
6 7 Hanukkah DRB Meeting 7pm TO	8 Library Story Hour 10:30am L Bone Builders Exercise Class 10:30am CH	9 Tai Chi 4:30pm CH 4H Twilight Tails 6:30pm C Historical Society 7pm L	10 Conservation Commission Naturalist Speaker 7:30pm TO	11	12 Library Holiday Crafts Winterfest-5pm-Light Tree & See Santa on the Town Green. 6pm Hand Bells at Congregational Church.	
13 14 Planning Commission Mtg. 7pm TO	15 Library Story Hour 10:30am Holiday Crafting at the Library during regular hours. Bone Builders Exercise Class 10:30am CH Selectboard Mtg. 7pm TO	16 Tai Chi 4:30pm CH Holiday Crafting at the Library during regular hours.	17 Library Trustees 7pm L Holiday Crafting at the Library during regular hours.	18	19 Recycle 8am-12pm TG Holiday Crafting at the Library during regular hours.	
20 21 Winter Begins No School K-12 DRB Meeting 7pm TO	22 No School K-12 Library Story Hour 10:30am L Bone Builders Exercise Class 10:30am CH	23 No School K-12 Town Office Closed Library Hours 1pm-5pm	24 No School K-12 Town Office Closed Library Closed	25 Christmas No School K-12 Town Office Closed	26 Recycle 8am-12pm TG	
27	28 No School K-12	29 No School K-12 Library Story Hour 10:30am L Bone Builders Exercise Class 10:30am CH	30 No School K-12	31 New Year's Eve No School K-12 Town Office Closed Library Hours 1pm-5pm	January 1, 2016 Happy New Year! No School K-12 Town Office Closed	
Sign your son up for Cub or Boy Scouts! Contact James Bashand at 349-3830.	Bone Builders Exercise Class! Tuesdays from 10:30-11:30am at the Congregational Church ON Town Hill Road. Contact Suzy at 453-5978 to sign up.	Rent the Town Hall for your own events or parties, or to teach classes. Please sub- mit your application at least 3 weeks prior to your event to allow the Selectboard	time to review and process the application. Applications are availa- ble at the Town Office or on the Town web-site.	*If your town group or club would like its meetings or events listed in the Town Newsletter Calendar, please contact Suzy at	newhavenrec@gmavt. net or ccasam@gmavt.net by the 15th of the month prior to the event for publishing.	To register in any Town group or club, please call one of the phone numbers listed below. Thanks~

Contacts: Fire Dept. 453-3654 * Town Shed 453-3397 * Beeman 453-2331 * MAUHS 453-2333 * ANESU 453-3657 * Energy Coor 453-4752 * Ladies Union 877-3080 * Library 453-4015 * Karate 453-2405 *
Equine 4H 453-5219 * Dairy 4H 545-2484 * Cub Scouts 349-3830 * Boy Scouts 453-2128 * Girl Scouts 453-4735 * Soccer 545-2742 * Little League 453-2724 * Historical Soc. 989-4066 *
* Crime Watch 453-5978 & Police 388-4919 * Mary Johnson Children's Center 388-4304 * Boot Camp 388-6252 * Bone Builders 453-5978 * Tai Chi-545-2106 * ZUMBA 758-2482 *

Town of New Haven
78 North Street
New Haven, VT 05472
453-3516

PRSR STD
US Postage Paid
New Haven Vermont
Permit No. 1

Postal Patron
New Haven, VT 05472

www.newhavenvt.com

Recycling Saturday mornings 8-12 at Town Garage. Trash drop-off at same time for a fee.

Town Office Hours:

Monday 9:00 am – 4:30 pm
Tuesday 9:00 am – 4:30 pm
Wednesday 9:00 am – 4:30 pm
Thursday 9:00 am – 4:30 pm

Closed: *Wed - Fri., December 23 - 25
Thurs & Fri, December 31 & January 1*

Library Hours

Tuesday 10:00 - 5:00
(10:30 Story Hour)
Wednesday 1:00 - 8:00
Thursday 1:00 - 8:00
Saturday 10:00 - 1:00

The newsletter is an open forum for town residents with reports & articles about New Haven & discussions of town matters. Articles of 500 words or less should be courteous & concern town events, news, & issues. One article per month. Please include your name, address, & phone number. (Only your name will be published.) Submit in electronic form by the 15th of the month to jmsimmons@gmavt.net Jean Simmons

Select Board Report - Page 1
Clerk's News - Page 1
School Board News - Page 1
Library News - Page 2
Friends of the Library - Page 2
Winterfest - Page 3
Memory Tree - Page 3
Cub Scouts - Page 4
First Response - Page 4
Historical Society - Page 4
Armchair Naturalist - Page 5
Letter about Anbaric - Page 5
Where Is/Was It? - Page 6
Looking for Mystery Photos - Page 6
Community Calendar - Page 7